



What is?

INCIDENT COMMAND SYSTEM

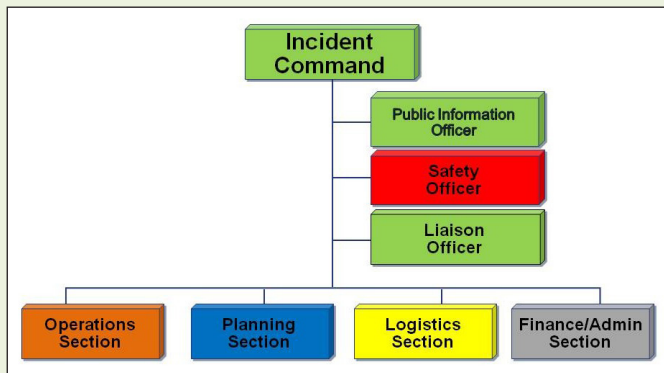
Born from the 1970 California wildfire siege, the Incident Command System (ICS) was developed to help agencies (federal, state, and local) manage wildland fires.

Imagine the chaos of wildland fire fighting resources responding to multiple emergencies with a lack of a common organization and widely different communication systems. Prior to the 1970s, there was a very limited prediction capability and no centralized organization for intelligence. Managing wildland fires where multiple jurisdictions were involved begged for an incident management model that promoted cooperation and collaboration. One of the biggest obstacles was the absence of a uniform terminology or qualification standards.

ICS Modular Organization

Based on the experiences of 1970, a management system with these components was created:

- Modular organization that can expand and contract as needed
- Common terminology, training, and qualifications
- Integrated communications
- Manageable span-of-control (1 to 5)



**FIRE
FACTS**

- One Incident Commander, but can establish Unified Command on multi-jurisdictional incidents to establish objectives, strategy, and priorities
- Consolidated action plans

ICS Continues to Prove Itself

The Incident Command System has proven itself over 45-years on wildfires, pollution spills, terror attacks, hurricanes and many other disasters. From its humble beginning in 5 southern California counties, today the management system has been adopted as the National Inter-Agency Management System (NIIMS) for all hazards including police, fire, maritime, and other incidents.

The 2015 fire season in the Pacific Northwest reached historic proportions burning over 1 million acres. At the peak of fire activity, 21 Incident Management Teams and 12,468 personnel were assigned to wildfires burning in the Region. Firefighters from the 50 states as well as Canada, Australia, New Zealand, the Oregon National Guard and the United States Army were mobilized to attack the fires. ICS provided the organizational structure to effectively manage these events.

For more information:

Incident Command System Resources available at:

<https://www.fema.gov/incident-command-system-resources>

Visit us at:

twitter / @nwfirescience | facebook / Northwest Fire Science Consortium

email / nw.fireconsortium@oregonstate.edu | online / www.nwfirescience.org



Oregon State
University



Sustainable
Northwest



UNIVERSITY
OF OREGON



Ecosystem
Workforce Program



JOINT FIRE SCIENCE PROGRAM



Oregon State University
Extension Service



The Nature
Conservancy

Protecting nature. Preserving life.™



Center for Natural
Lands Management



FOREST SERVICE
U.S. DEPARTMENT OF AGRICULTURE